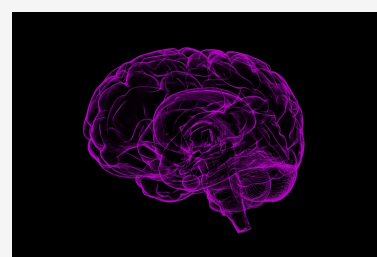




Perspectives

New look, same Perspectives!

We might have a new look, but you'll still find the latest research and updates across the Health Sciences. In this issue, get a sneak peek at Pitt's new Alzheimer's lab, see how a new discovery can help Pitt researchers better understand several genetic diseases, and read about how artificial intelligence is helping in the detection of lung cancer.



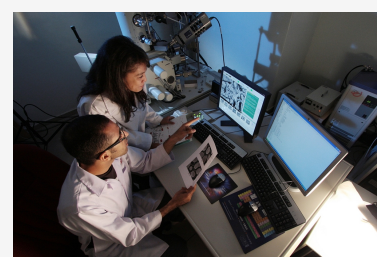
Origins of Alzheimer's

[Get a preview of Pitt's new Alzheimer's lab](#) from founder Arthur S. Levine, MD, Senior Vice Chancellor for the Health Sciences and John and Gertrude Petersen Dean of Medicine.



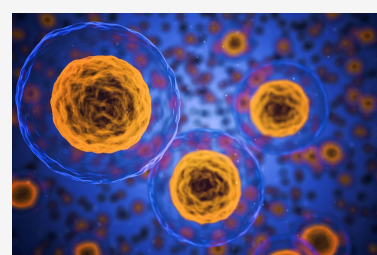
Ears Up!

SHRS's Catherine Palmer, PhD, shares her knowledge and recommendations about [when you should get your hearing checked](#) and how you can help to [prevent tinnitus](#).



Calculating Cancer

Pitt and UPMC Hillman Cancer Center are using artificial intelligence to rule out lung cancer in patients. [Learn how an algorithm makes it all work.](#)



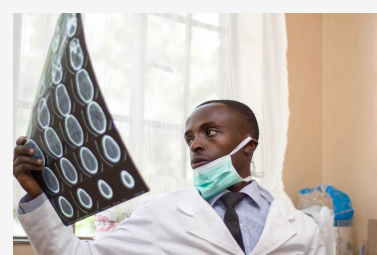
What's New With Nuclei?

Pitt Public Health's Quasar Padiath, MBBS, PhD, and colleagues have discovered something new about cellular nuclei. [Watch this animation](#) to see what they've found and what it could mean for genetic diseases.



Innovation or Corporation

Prescription drug prices in the U.S. continue to rise, and Pitt Pharmacy's Inmaculada Hernandez, PharmD, PhD (GSPH '16), co-authored a study to find out what's driving the increase. [See their conclusions and what comes next.](#)



Dental Goes Digital

How are data, 3D printing, scans, and computer-assisted surgery revolutionizing dental care? Read this [Pitt Dental Magazine](#) cover story to learn how the school is driving the digital revolution in care and evolving the curriculum for the future.

Alumni Making Headlines

- This year's Chancellor's awards for Distinguished Service, Research, and Teaching included six exceptional Pitt alumni: Thistle Elias, DrPH, MPA (GSPH '93, GSPH '12); Steven Little, PhD (MED '09); Derek Angus, MD, MPH (GSPH '92, Resident Alumnus); Barbara Barnhart, MEd (UPG '91, EDUC '10); Robin Grubs, PhD (GSPH '91, '02); and Tammy Haley, PhD, MPH, MSN (NURS '02, '12, GSPH '13). [See what makes these Pitt faculty stand out.](#)
- Alumna Alia Alghwiri, PhD (SHRS '08, '11), has been named the first full professor of physical therapy in Jordan. She also serves as the vice dean of the [School of Rehabilitation Sciences at the University of Jordan](#) and is the president of the Jordanian Physiotherapy Society.
- Pitt Public Health alumna Julia Carter, MPH (GSPH '17), is competing in the 38th season of the CBS show *Survivor*. [See what makes her a strong competitor.](#)
- Kathi Elliot, DNP, MSW (A&S '04, NURS '08, SOC WK '08), is making a deep impact in lives of girls and young women in Allegheny County through her executive director role at [Gwen's Girls](#). [Read about her multi-faceted work.](#)
- Bradley Martin, MD (Fellow Alumnus), has been [named as the chief medical officer for quality](#) at Summa Health in Akron, Ohio.

Stay Connected to Your School

- School of Dental Medicine
- School of Health and Rehabilitation Sciences
- School of Medicine
- School of Nursing
- School of Pharmacy
- Graduate School of Public Health

Upcoming Events

We hope you can join us for one (or all) of these signature events:

Life Sciences Week – Investing in a Smarter Life
May 13-18, 2019 – Pittsburgh, PA
Five-day exploration of cutting-edge technologies, sciences and partnerships that define the future of life science innovation. [Full schedule and details.](#)

Save the Date!

[Pitt Alumni Receptions with Provost Cudd](#)
June 6, 2019 – New York City, NY
June 18, 2019 – Washington, DC

[Pitt Homecoming 2019](#)
October 23-27, 2019 – Pittsburgh, PA

Past Events

The 14th annual Winter Academy in Naples, Florida was a huge success thanks to our sponsors, presenters, and all who attended. [See photos from this year's event and learn more.](#)



Want to financially support great research and projects like these? Visit [www.giveto.pitt.edu](#) or contact Matt Hiser at mah377@pitt.edu or 412-624-5639.

What else would you like to see? E-mail Sarah McMullen, director, Alumni Relations Health Sciences at skm45@pitt.edu.

This e-newsletter is distributed to Pitt health sciences alumni and people who have attended a health sciences alumni relations-sponsored event. If you wish to be removed from this group's mailing list, [click here](#).